

\$%

“ ” “ ” “ ” “ ” “ ”

\$&

\$:

\$(.....
.....

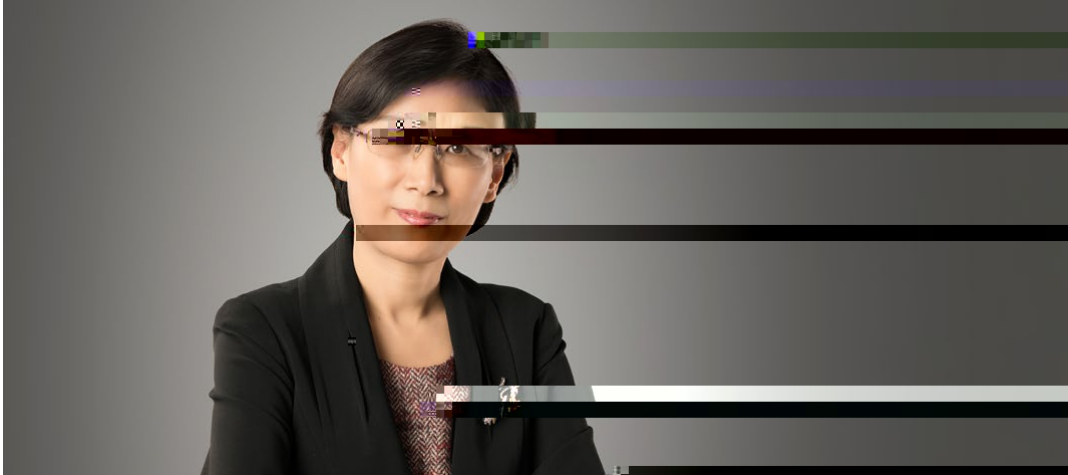
\$)

\$*

www.ssomn



	3		21
	4	22	
5		22	
6			
7		28	
9			
10		28	
10			
11			29
12		30	
		37	
	13	39	
14		40	
16		41	
18			43
19			43
20			44



“ ”

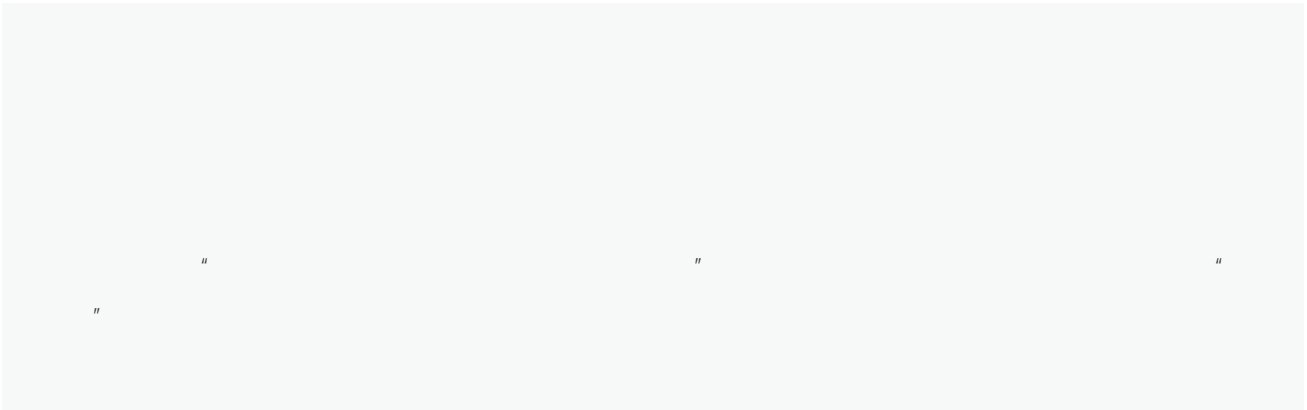
“ ”

“ ”

“ ”



COMPREHEND BEIJING SIFANG AUTOMATION

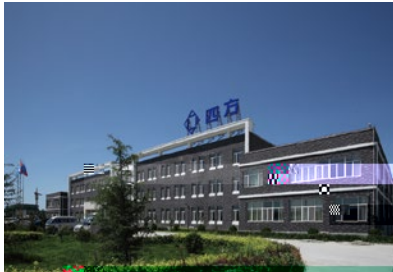


69B;



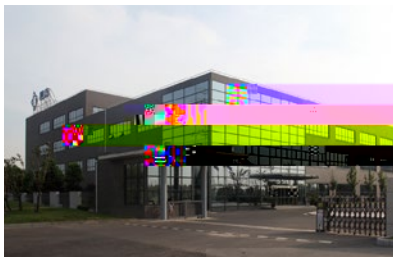
65C8B; #K I < 5B

/



B5B>B; #<I N<CI

/

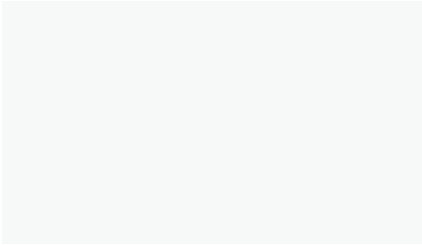




.....●



.....●



.....●

“ ”



.....●

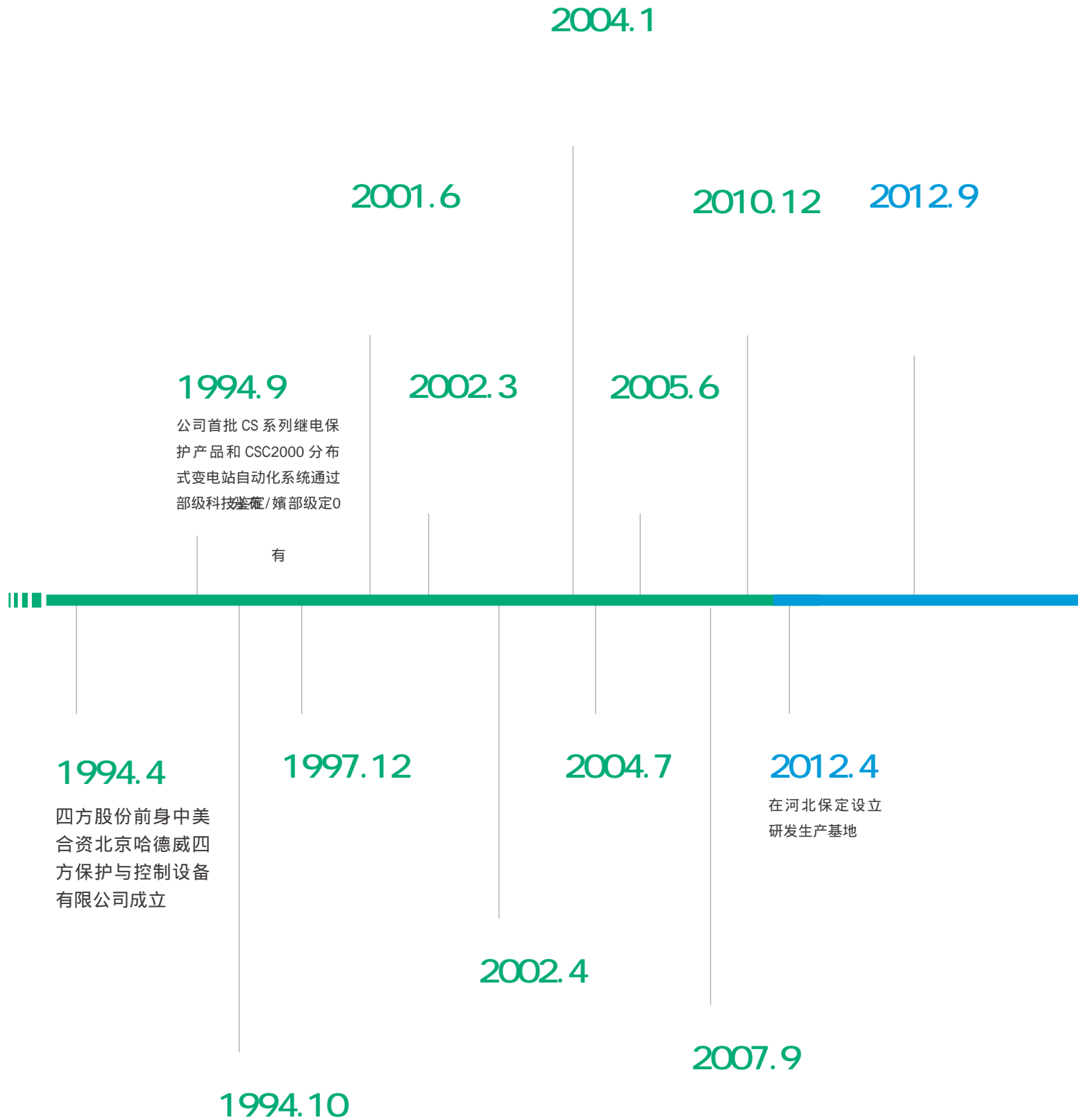


.....●



.....●





2018.1

2021.12

2015.5

2020.9

2017.6

2019.4

2015

2017.12

2016.12

公司在海外签订的第一个 EPC 项目—阿尔及利亚国家石油公司 Sonatrach 油气管道项目

公司大型汽轮发电机组次同步谐振 / 振荡的控制与保护技术、装备及应用荣获国家科技进步二等奖，打破国外公司垄断地位

四方型式实验室顺利通过了德国莱茵 TÜV 专项认证，成为国内首家通过该认证的实验室

2018.9

公司荣膺“国家技术创新示范企业”称号

2021.1

2020.12

公司 4 项自主可控科技成果全部通过鉴定，其中 3 项成果达到国际领先水平，同时取得多项首创技术

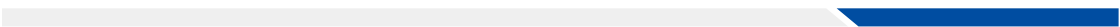
2013.10

公司设立武汉研发基地

2015.7

2020.5

成立综合能源与储能事业部，服务新型电力系统建设

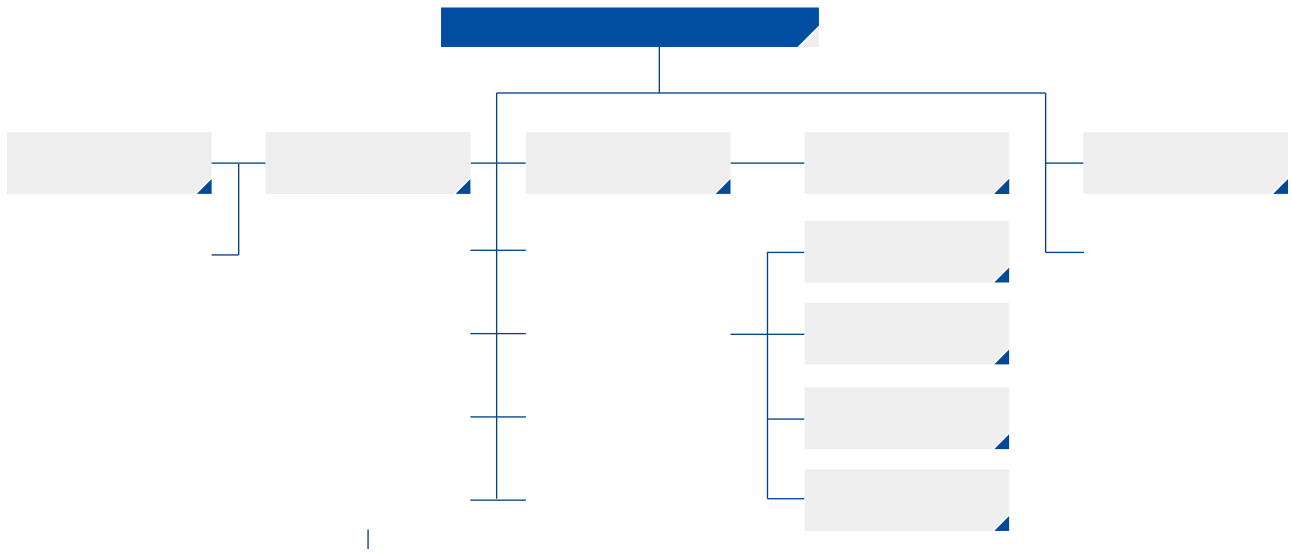


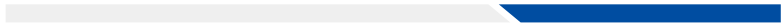
“ ”

“ ”

	“ ”	
		•
		•

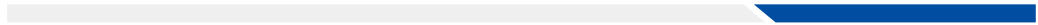




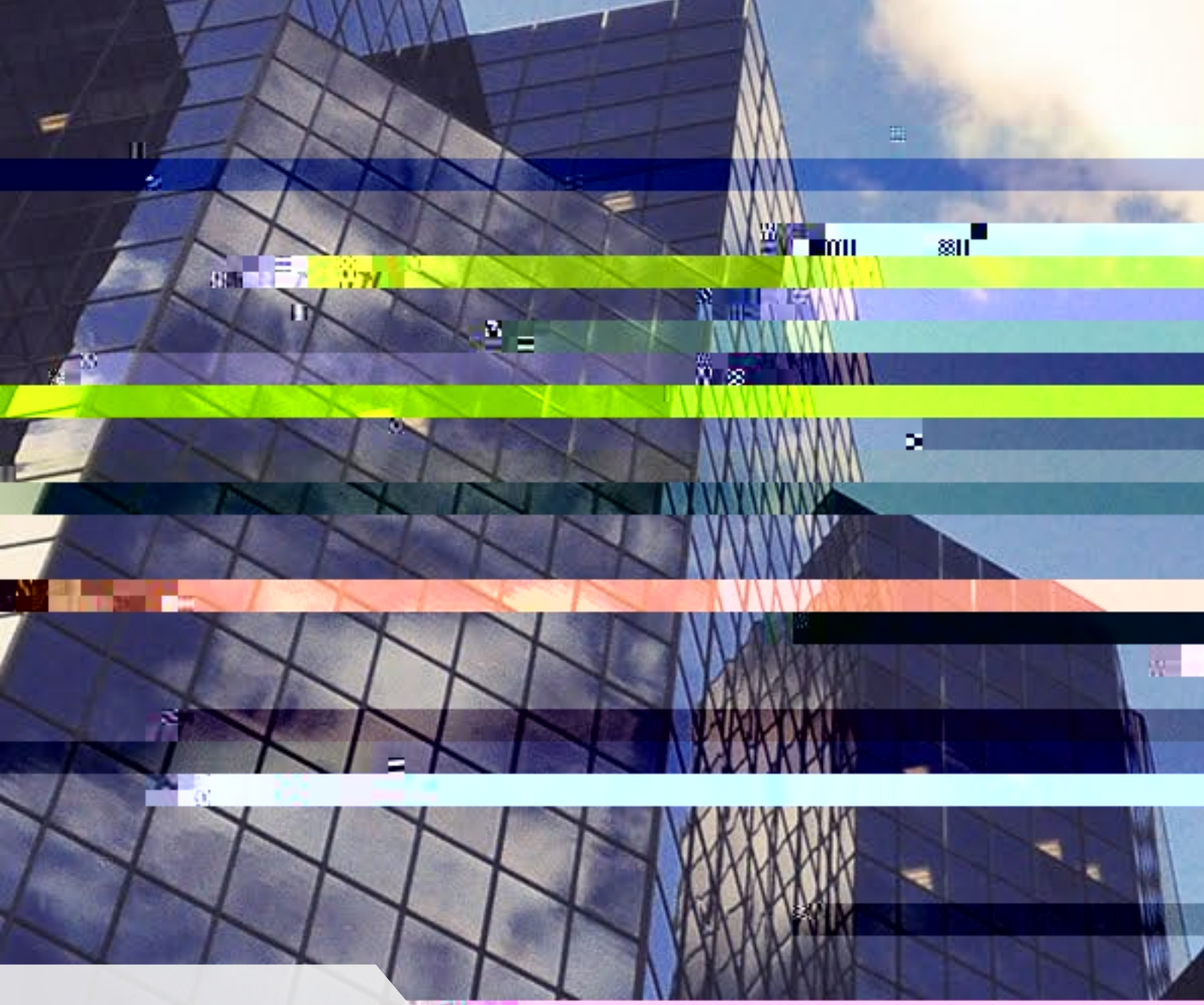


>			>		
	⋮	⋮	⋮		
	⋮		⋮		
			⋮		





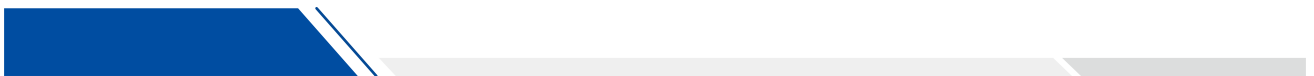
--



IMPROVING CORPORATE GOVERNANCE



† H "p'\$Â ð•ð] MèE£1PÞ o \$€" "L ! †' RâèÃ" Z™# !£C o @\$€" "L ßSJöú £Eö/ \$€" "L !"€ S"ÕÃO ;ž_





170+

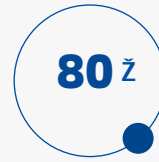


>50%



>24%

>10%



80%



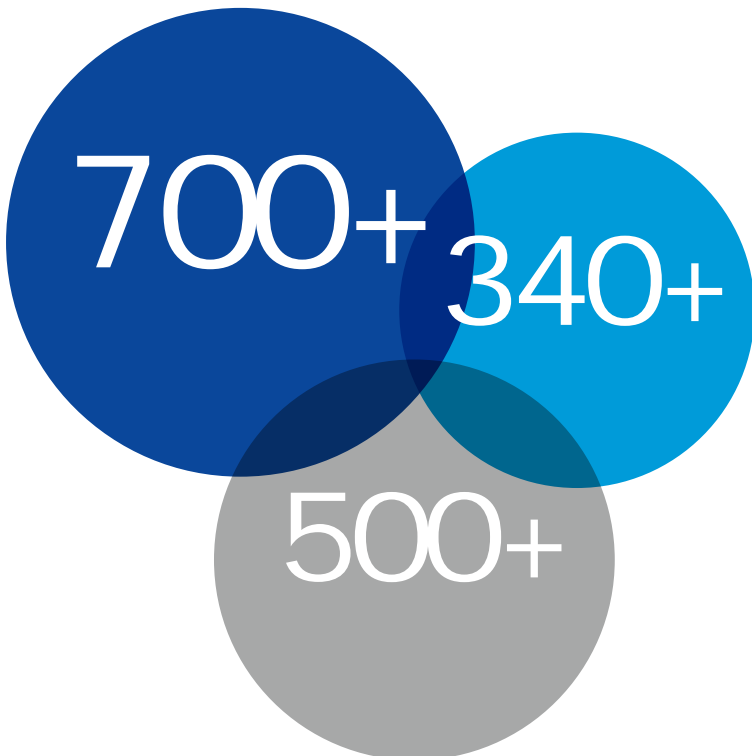
4

3

1



±30kV



138

23

863

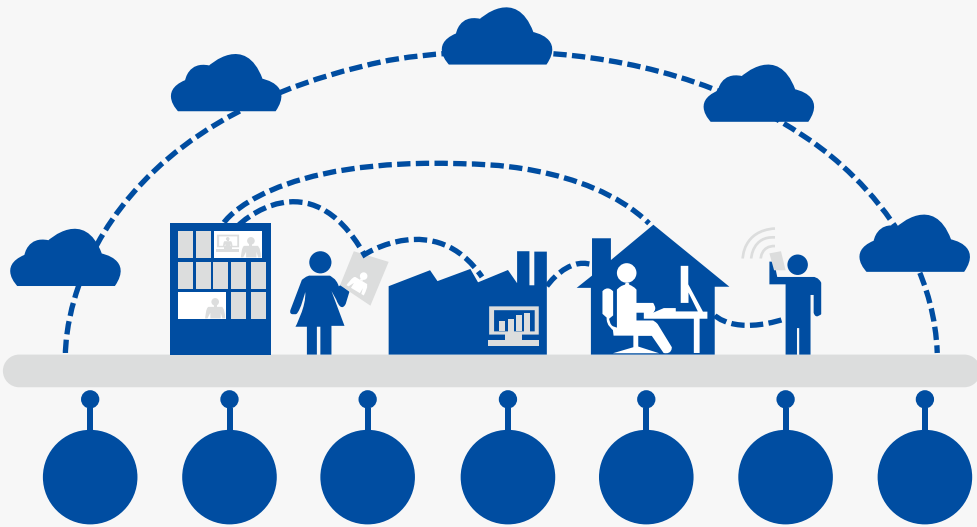
3

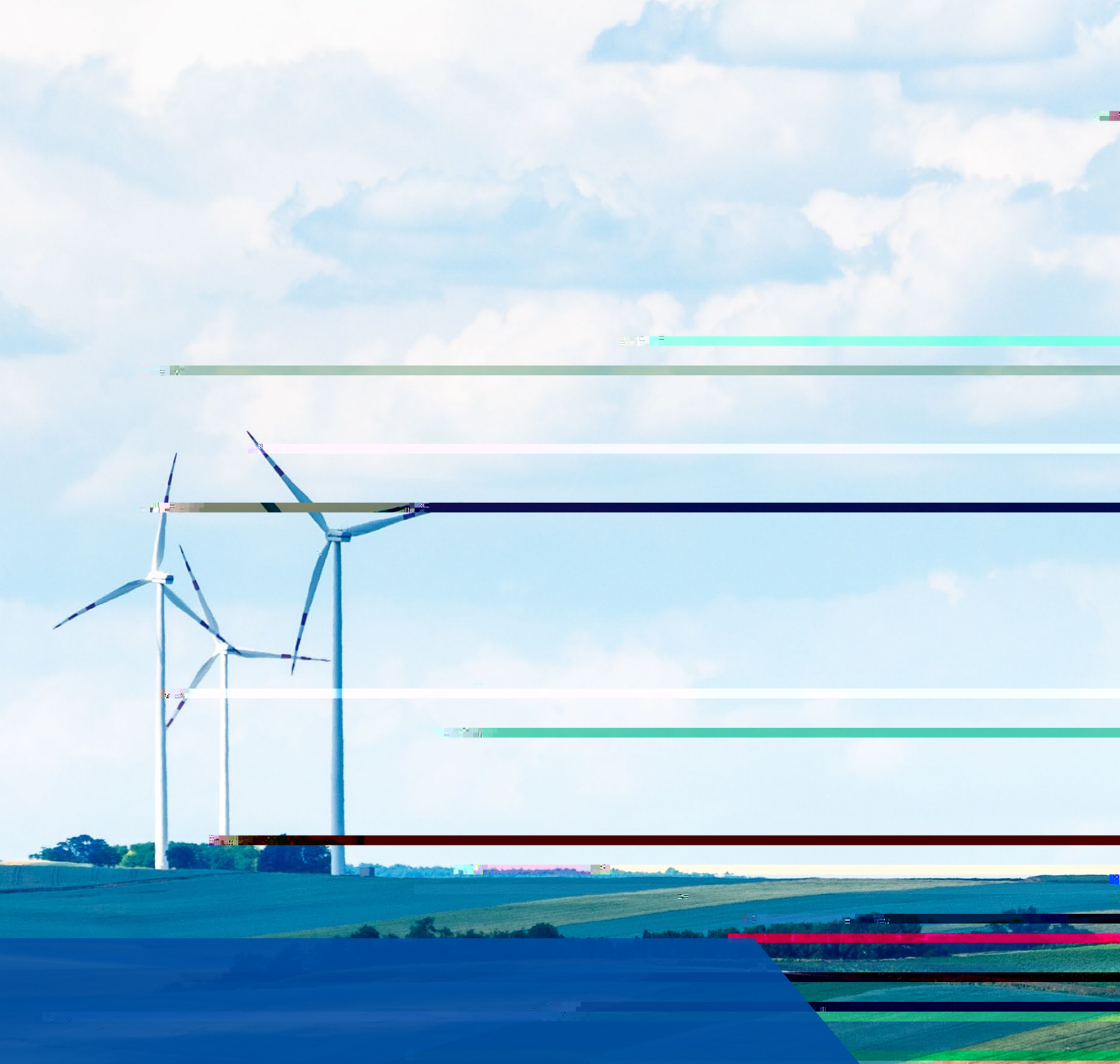
2

27

139

153



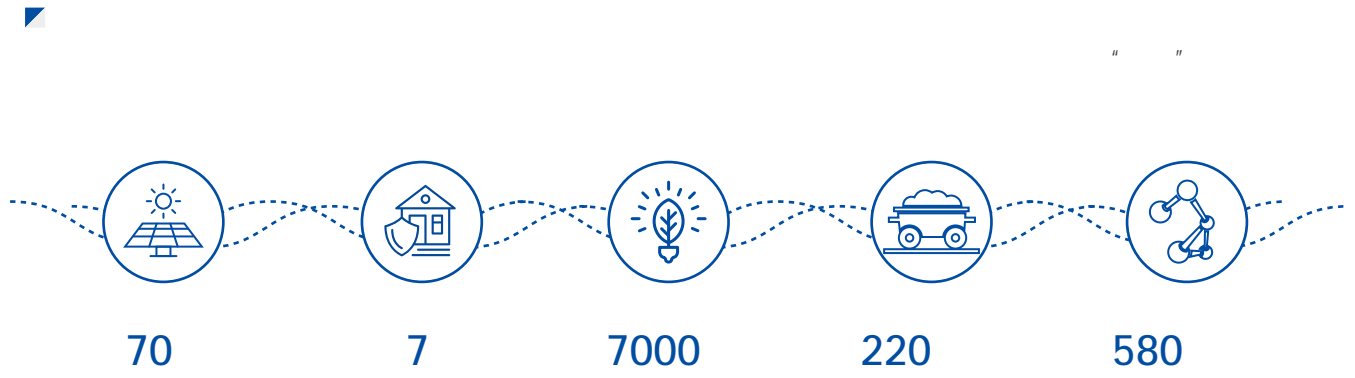


PRACTICE GREEN DEVELOPMENT

“

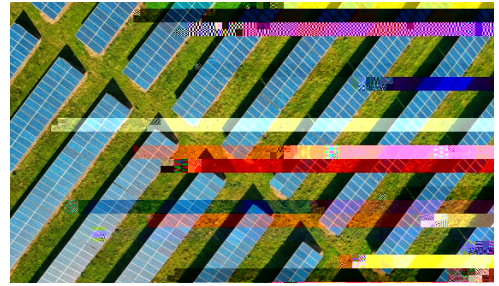
”

•



P\$%

110



P\$%





"

"

P\$%

"

"

"

"

"

"



"

"

"

"

"

"







P\$%

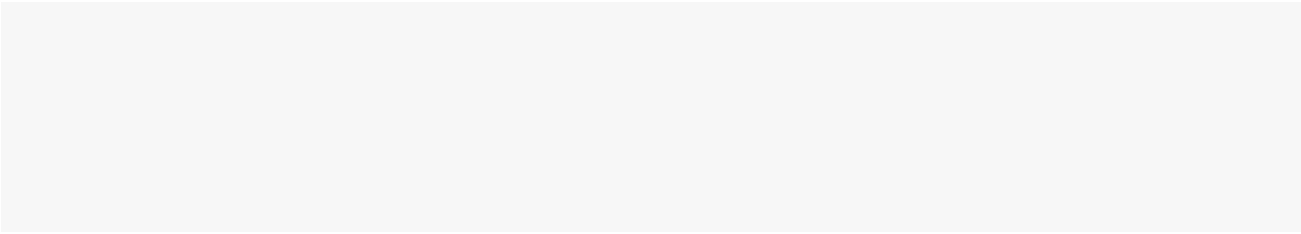
~





The image features a sunset background with silhouettes of people in the lower right. A large blue geometric shape, resembling a trapezoid or a stylized 'A', is positioned in the lower half of the frame. The text 'PERFORM SOCIAL RESPONSIBILITY' is centered within this blue shape in white, uppercase letters. The overall color palette is warm, dominated by oranges and yellows from the sunset, contrasted with the cool blue of the geometric shape.

PERFORM SOCIAL RESPONSIBILITY



P\$%

100

" "

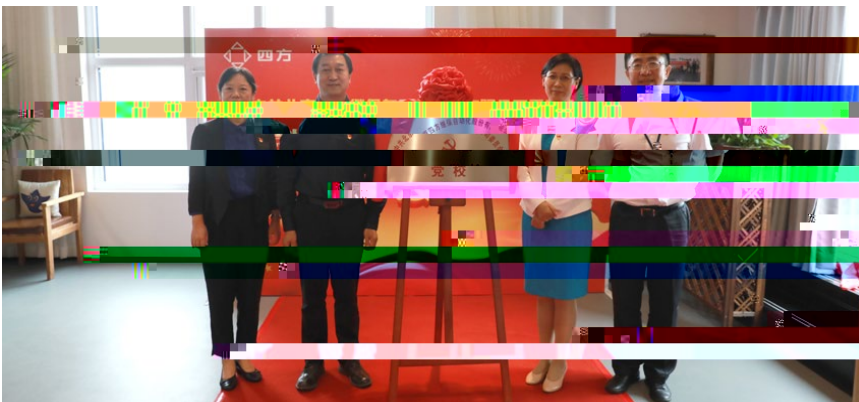


P\$&

" "



P\$'



"

"



"

"

26

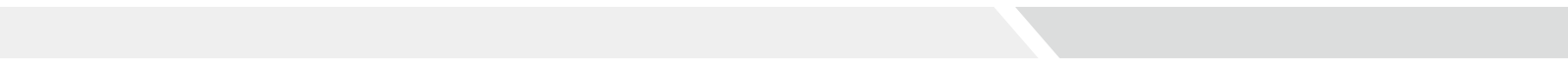
"

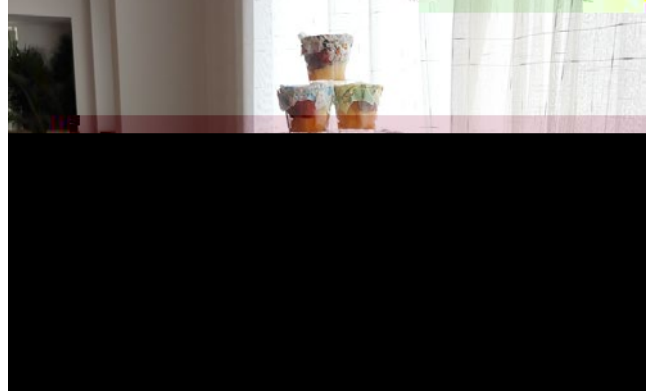
"



“ ”





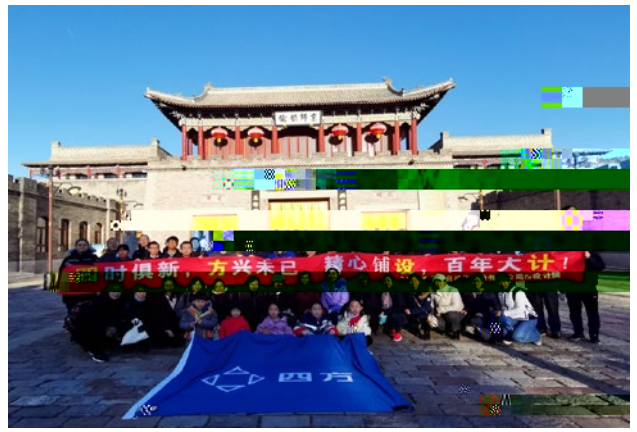


" "

" "

"

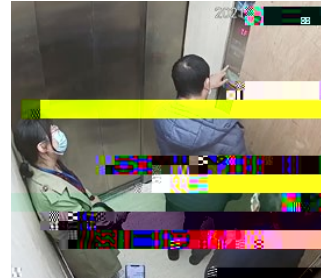
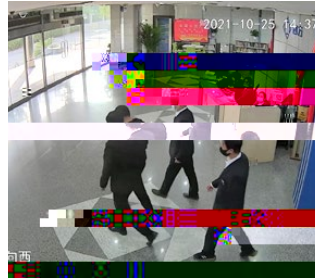
"



P&S

"

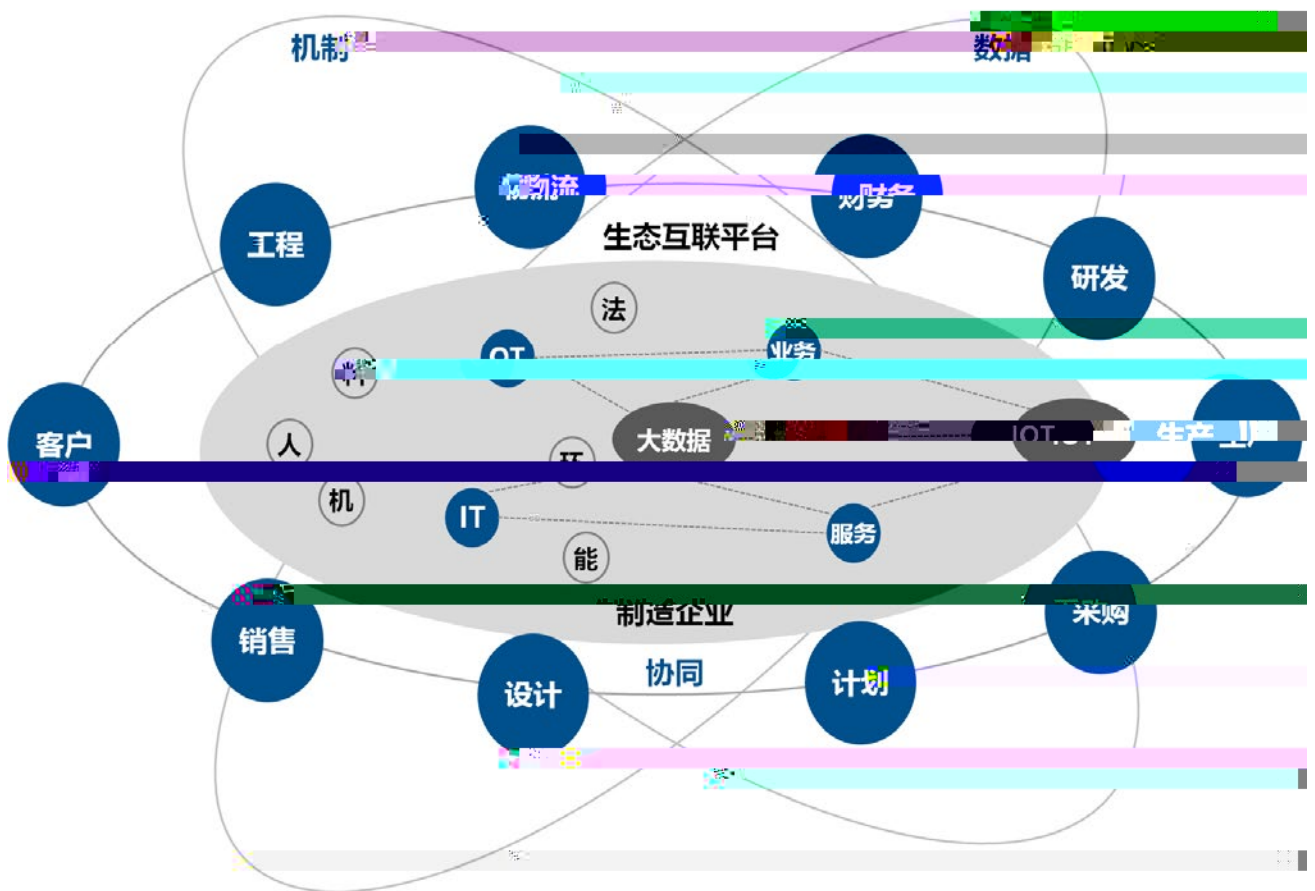
"



"

"

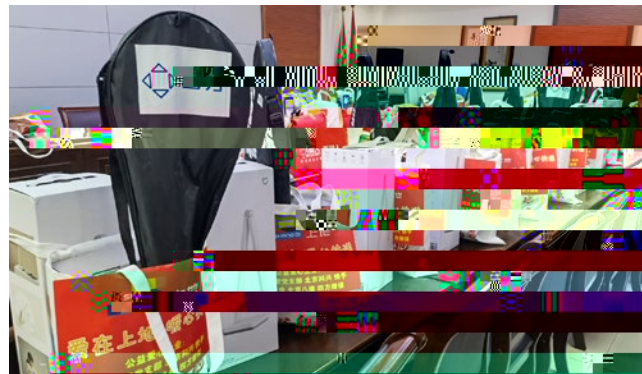
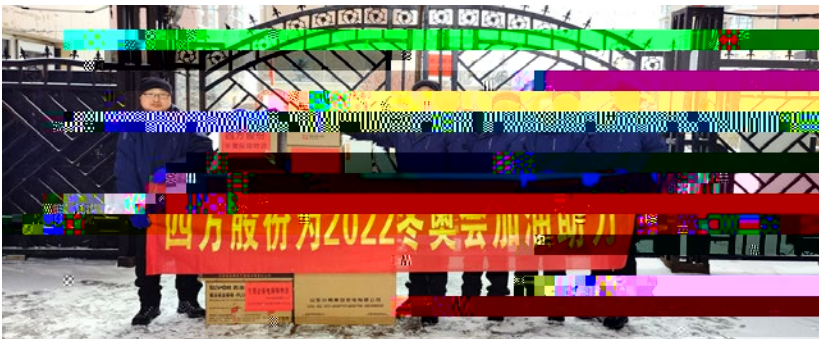






“ ” “ ”

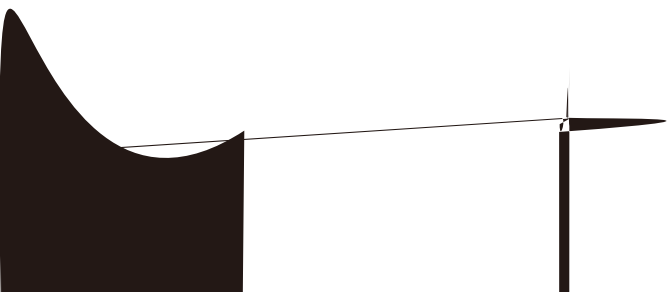




		2021
1		73.71
2		42.98
		38.39
		0.56 /
		11.64%
		38.71
		4.52
		4.60
		4.62



志 在 四 方



铸